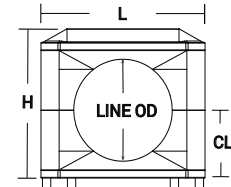


Tube Uni-Hinge Block Hangers

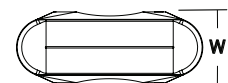
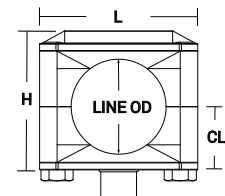
Base Mount Block Hangers - B24-BM

Tube O.D.	Line O.D. (in)	H (in)	L (in)	W (in)	CL (in)	304 Stainless Steel Part #
1/2"	0.50	1.70	1.93	0.75	0.73	B24-BM-G050
3/4"	0.75	1.70	1.93	0.75	0.73	B24-BM-G075
1"	1.00	1.70	1.93	0.75	0.73	B24-BM-G100
1-1/2"	1.50	2.19	2.49	0.75	0.97	B24-BM-G150
2"	2.00	2.69	2.99	0.88	1.25	B24-BM-G200
2-1/2"	2.50	3.19	3.36	0.88	1.49	B24-BM-G250
3"	3.00	3.97	3.99	0.88	1.85	B24-BM-G300



Base Mount Block Hanger Threaded Couplings - B24-BMTC

Tube Size	Line O.D. (in)	H (in)	L (in)	W (in)	CL (in)	Round Coupling		304 Stainless Steel Part #
						Height (in)	Thread	
1/2"	0.50	1.70	1.93	0.75	0.73	0.47	3/8"-16	B24-BMTC-G050
3/4"	0.75	1.70	1.93	0.75	0.73	0.47	3/8"-16	B24-BMTC-G075
1"	1.00	1.70	1.93	0.75	0.73	0.47	3/8"-16	B24-BMTC-G100
1-1/2"	1.50	2.19	2.49	0.75	0.97	0.47	3/8"-16	B24-BMTC-G150
2"	2.00	2.69	2.99	0.88	1.25	0.47	3/8"-16	B24-BMTC-G200
2-1/2"	2.50	3.19	3.36	0.88	1.49	0.59	1/2"-13	B24-BMTC-G250
3"	3.00	3.97	3.99	0.88	1.85	0.59	1/2"-13	B24-BMTC-G300



Base Mount Block Hanger Rod Mounts - B24-BMR6

Tube Size	Line O.D. (in)	H (in)	L (in)	W (in)	CL (in)	Rod (stock length)		304 Stainless Steel Part #
						Length (in)	O.D. (in)	
1/2"	0.50	1.70	1.93	0.75	0.73	6.00	0.38	B24-BMR6-G050
3/4"	0.75	1.70	1.93	0.75	0.73	6.00	0.38	B24-BMR6-G075
1"	1.00	1.70	1.93	0.75	0.73	6.00	0.38	B24-BMR6-G100
1-1/2"	1.50	2.19	2.49	0.75	0.97	6.00	0.38	B24-BMR6-G150
2"	2.00	2.69	2.99	0.88	1.25	6.00	0.38	B24-BMR6-G200
2-1/2"	2.50	3.19	3.36	0.88	1.49	6.00	0.50	B24-BMR6-G250
3"	3.00	3.97	3.99	0.88	1.85	6.00	0.50	B24-BMR6-G300

