

NPT Threaded 45° Elbows

Female NPT	150# Iron Part #
1/8"	EL4518
1/4"	EL4525
3/8"	EL4538
1/2"	EL4550
3/4"	EL4575
1"	EL45100
1-1/4"	EL45125
1-1/2"	EL45150
2"	EL45200
2-1/2"	EL45250
3"	EL45300
4"	EL45400
5"	EL45500
6"	EL45600



Size	150# Iron Part #	150# Galvanized Iron Part #
1/8"	SE4518	---
1/4"	SE4525	SE4525G
3/8"	SE4538	---
1/2"	SE4550	SE4550G
3/4"	SE4575	SE4575G
1"	SE45100	---
1-1/4"	SE45125	SE45125G
1-1/2"	SE45150	SE45150G
2"	SE45200	SE45200G
2-1/2"	SE45250	SE45250G
3"	SE45300	SE45300G
4"	SE45400	SE45400G



150# galvanized iron

Feature

- Ref SAE 130339

Female NPTF	Male NPTF	Extruded Brass		Opt Qty	316 Stainless Steel ¹ Part #	Opt Qty
		Previous Part #	Part #			
1/8"	1/8"	306-0202	3060202C	25	3060202SS	25
1/4"	1/4"	306-0404	3060404C	25	3060404SS	25
3/8"	3/8"	306-0606	3060606C	25	3060606SS	25
1/2"	1/2"	306-0808	3060808C	25	3060808SS	10
3/4"	3/4"	306-1212	3061212C	10	3061212SS	10
1"	1"	---	---	---	3061616SS	5



extruded brass



316 stainless steel

¹ NPT thread

NPTF 45° Female Pipe Elbows

Female NPTF	Brass Part #	Opt Qty
1/8"	3080202C	25
1/4"	3080404C	25
3/8"	3080606C	25
1/2"	3080808C	25

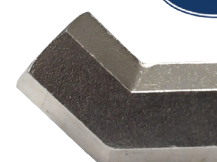


New

P

NPT 45° Female Pipe Elbows

Female NPT	316 Stainless Steel Part #	Opt Qty
1/8"	3080202SS	25
1/4"	3080404SS	25
3/8"	3080606SS	25
1/2"	3080808SS	10
3/4"	3081212SS	10



New

NOTE: For additional information on pipe dimensions please reference dixonvalve.com.